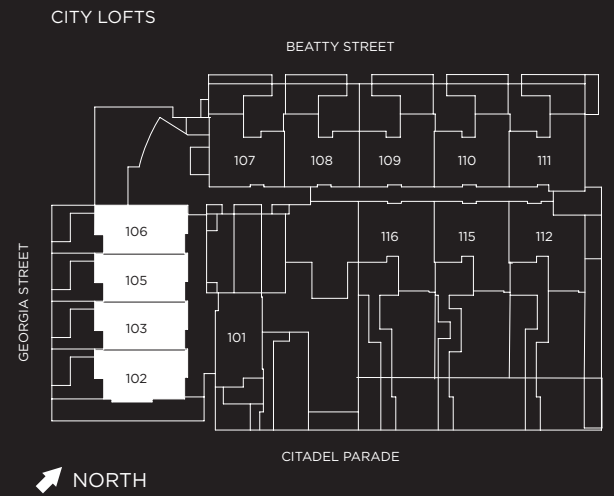


# CITY LOFTS 102-106

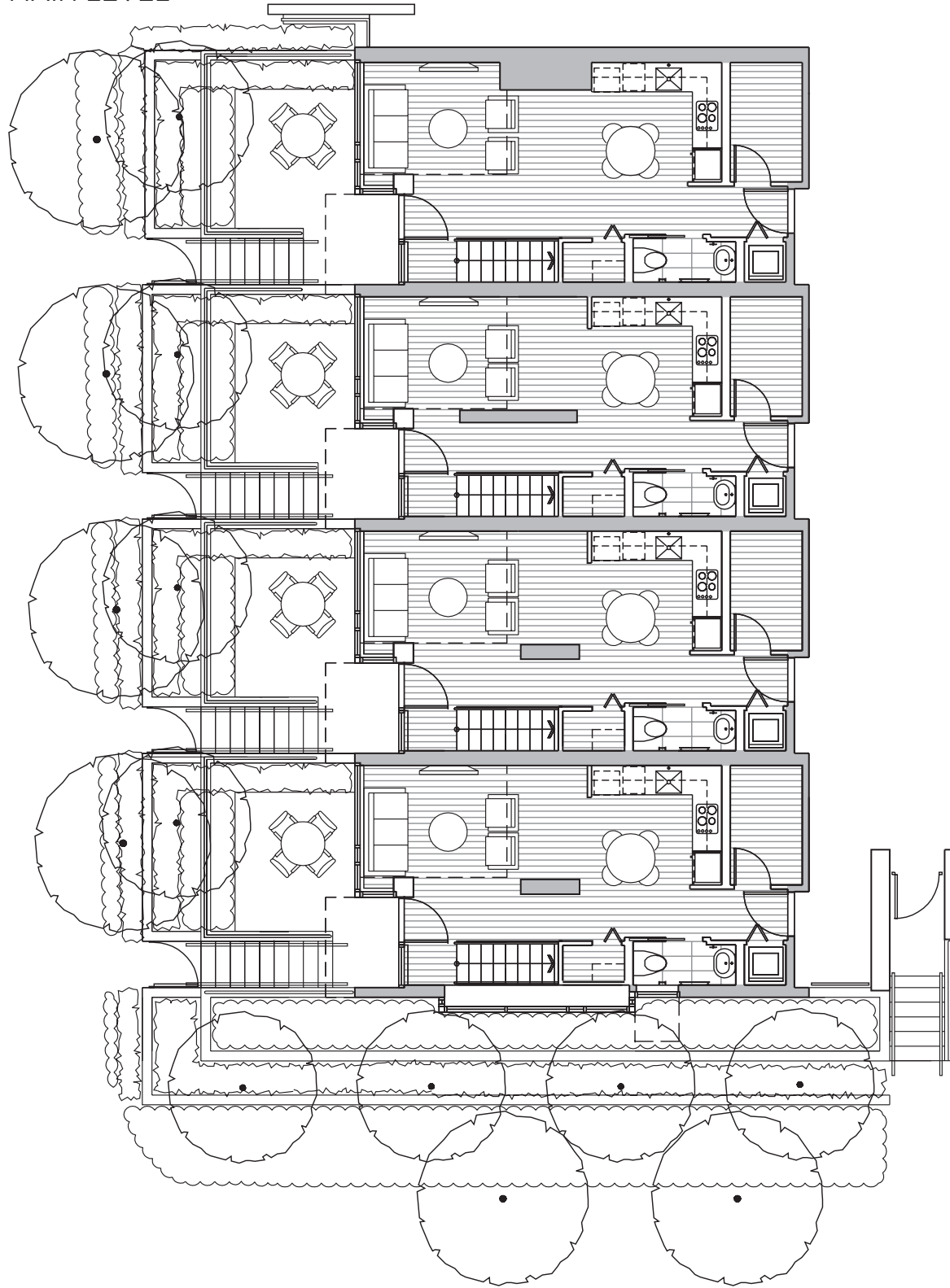
## 1 BEDROOM LOFT + DEN

| SUITE                           | ENCLOSED AREA | BALCONY/PATIO/LANDSCAPED AREA | TOTAL AREA    |
|---------------------------------|---------------|-------------------------------|---------------|
| <b>City Loft 102</b>            | 887 sq. ft.   | 240 sq. ft.                   | 1,127 sq. ft. |
| <b>City Lofts 103 &amp; 105</b> | 833 sq. ft.   | 225 sq. ft.                   | 1,058 sq. ft. |
| <b>City Loft 106</b>            | 843 sq. ft.   | 225 sq. ft.                   | 1,068 sq. ft. |

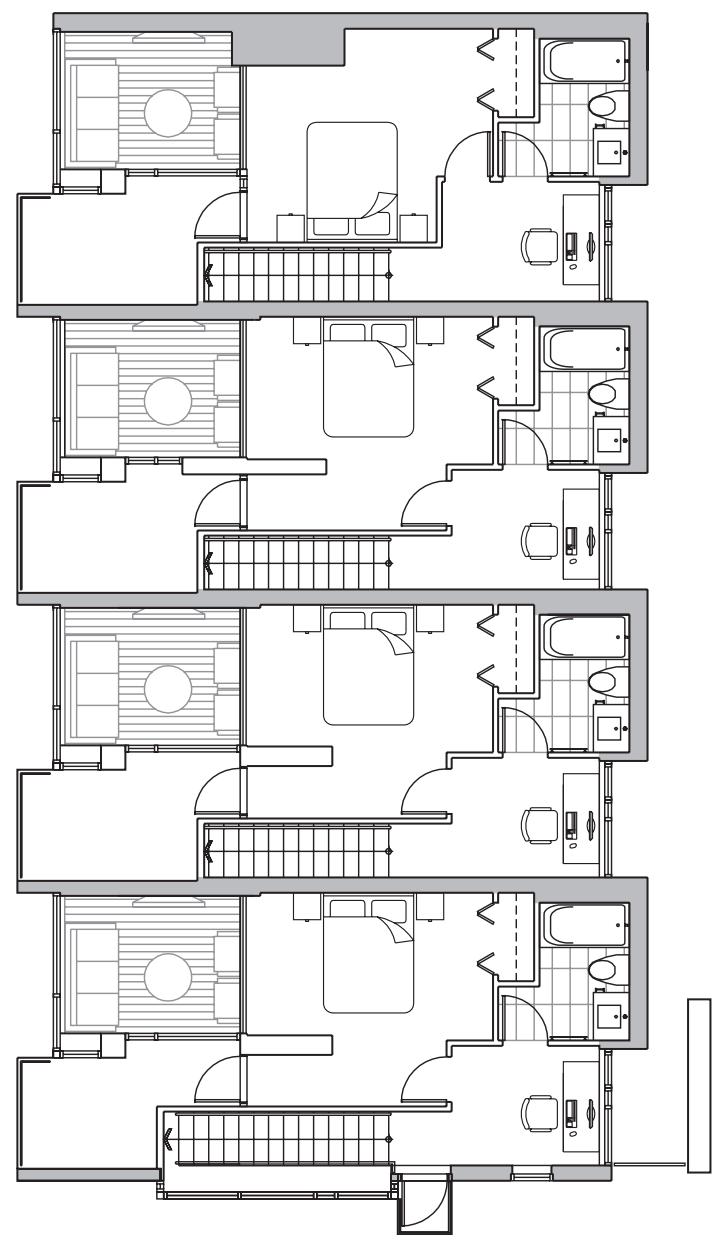
Actual City Loft plans may include columns, crossbeams and/or other minor variations from the typical plan illustrated.



### MAIN LEVEL



### UPPER LEVEL



COSMO

The developer reserves the right to make modifications and changes to building design, specifications, features, ceiling heights and floor plans without notification. Suite sizes are computed to the outside face of exterior walls, the outside face of walls adjacent to common areas and to the centerline of walls common to other suites. Measurements for exterior balconies and terraces are computed from the outside face of exterior walls to slab edges or the outside face of parapets. The flooring pattern shown on plan does not indicate the actual wood or laminate direction installed. The floor key may vary depending on the floor the suite is on. Room sets illustrated are the designer's and artist's suggestions of finishing and decorating style. All illustrations reflect the artist's interpretation of the project and do not take into account the neighbouring buildings, physical structures, streets and landscape. These matters will be governed entirely by the terms of the applicable Disclosure Statement and purchase contract in each case. Cosmo Project Limited Partnership. E.&O.E.

# CITY LOFTS 107-111

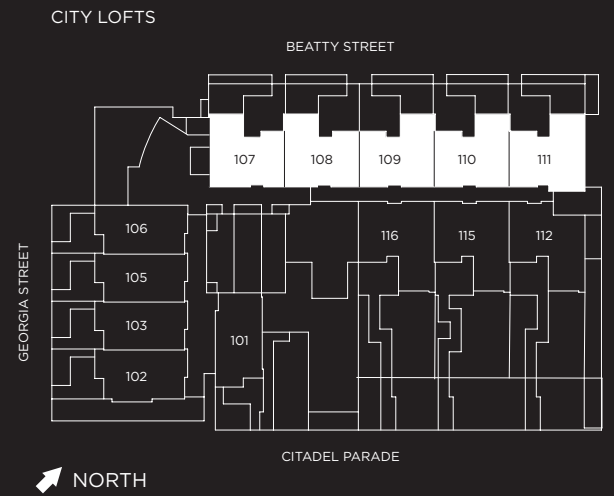
## 1 BEDROOM + LOFT + DEN

| SUITE                | ENCLOSED AREA | BALCONY/PATIO/LANDSCAPED AREA | TOTAL AREA    |
|----------------------|---------------|-------------------------------|---------------|
| <b>City Loft 107</b> | 1,139 sq. ft. | 238 sq. ft.                   | 1,377 sq. ft. |
| <b>City Loft 108</b> | 1,139 sq. ft. | 223 sq. ft.                   | 1,362 sq. ft. |

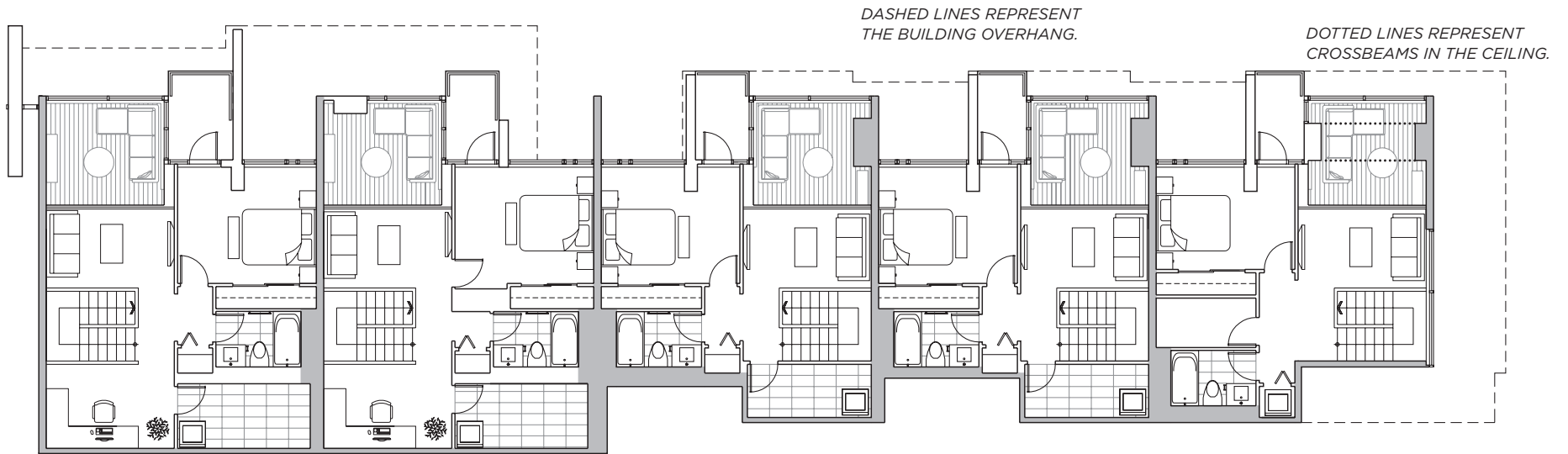
## 1 BEDROOM + LOFT

|                             |               |             |               |
|-----------------------------|---------------|-------------|---------------|
| <b>City Lofts 109 + 110</b> | 1,015 sq. ft. | 223 sq. ft. | 1,238 sq. ft. |
| <b>City Loft 111</b>        | 1,053 sq. ft. | 223 sq. ft. | 1,276 sq. ft. |

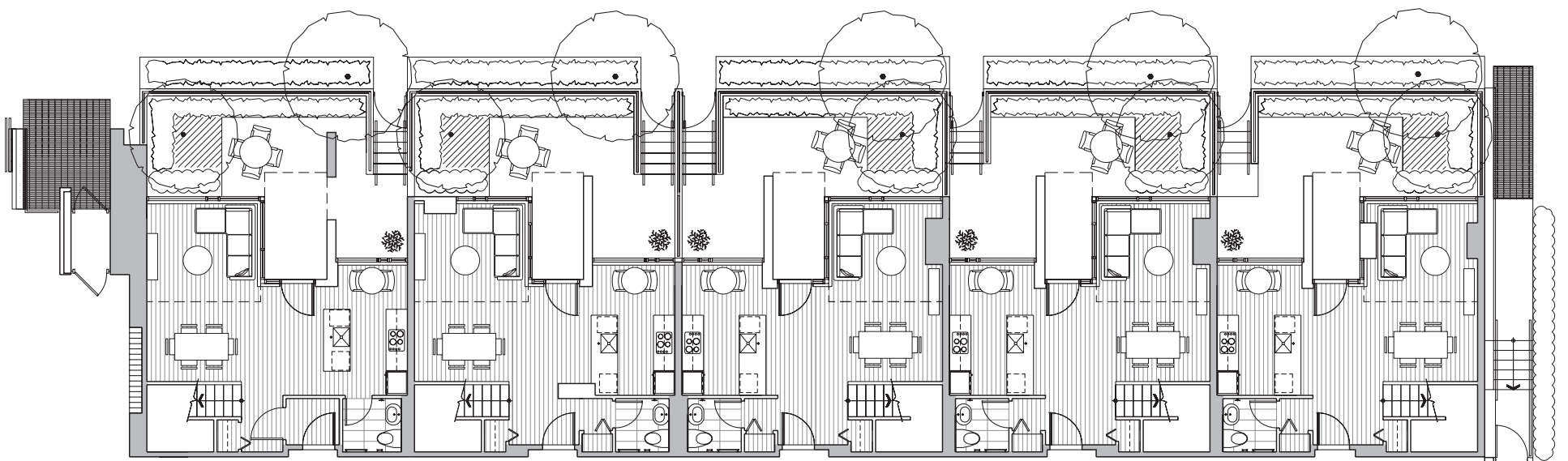
Actual City Loft plans may include columns, crossbeams and/or other minor variations from the typical plan illustrated.



## UPPER LEVEL



## MAIN LEVEL



**COSMO**

The developer reserves the right to make modifications and changes to building design, specifications, features, ceiling heights and floor plans without notification. Suite sizes are computed to the outside face of exterior walls, the outside face of walls adjacent to common areas and to the centerline of walls common to other suites. Measurements for exterior balconies and terraces are computed from the outside face of exterior walls to slab edges or the outside face of parapets. The flooring pattern shown on plan does not indicate the actual wood or laminate direction installed. The floor key may vary depending on the floor the suite is on. Room sets illustrated are the designer's and artist's suggestions of finishing and decorating style. All illustrations reflect the artist's interpretation of the project and do not take into account the neighbouring buildings, physical structures, streets and landscape. These matters will be governed entirely by the terms of the applicable Disclosure Statement and purchase contract in each case. Cosmo Project Limited Partnership. E.&O.E.

# CITY LOFTS 101 + 112-116

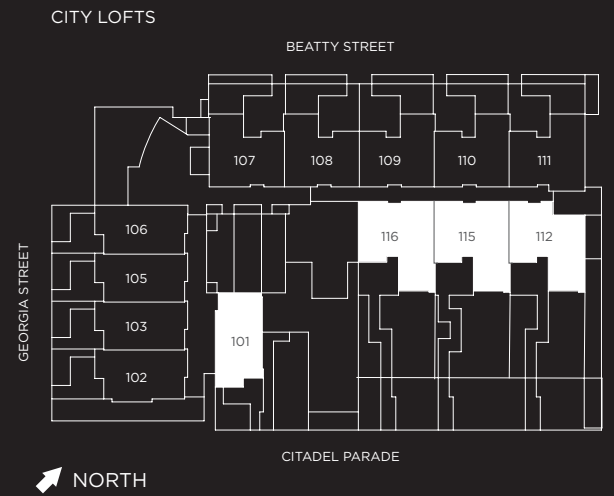
## 1 BEDROOM LOFT + DEN

| SUITE                | ENCLOSED AREA | BALCONY/PATIO/LANDSCAPED AREA | TOTAL AREA  |
|----------------------|---------------|-------------------------------|-------------|
| <b>City Loft 101</b> | 785 sq. ft.   | 180 sq. ft.                   | 965 sq. ft. |

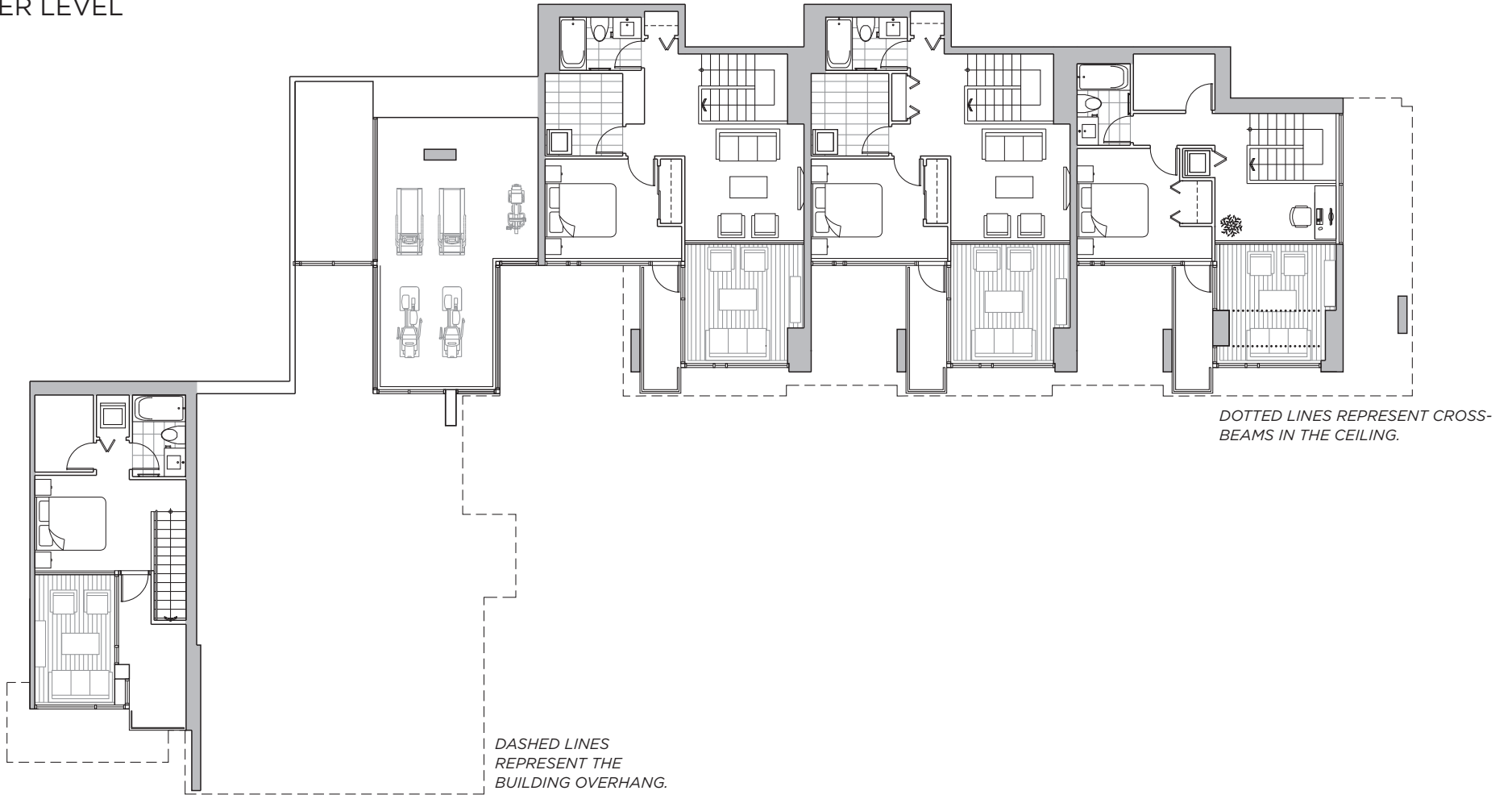
## 1 BEDROOM + LOFT

| SUITE                | ENCLOSED AREA | BALCONY/PATIO/LANDSCAPED AREA | TOTAL AREA    |
|----------------------|---------------|-------------------------------|---------------|
| <b>City Loft 112</b> | 1,017 sq. ft. | 902 sq. ft.                   | 1,919 sq. ft. |
| <b>City Loft 115</b> | 1,155 sq. ft. | 902 sq. ft.                   | 2,057 sq. ft. |
| <b>City Loft 116</b> | 1,167 sq. ft. | 902 sq. ft.                   | 2,069 sq. ft. |

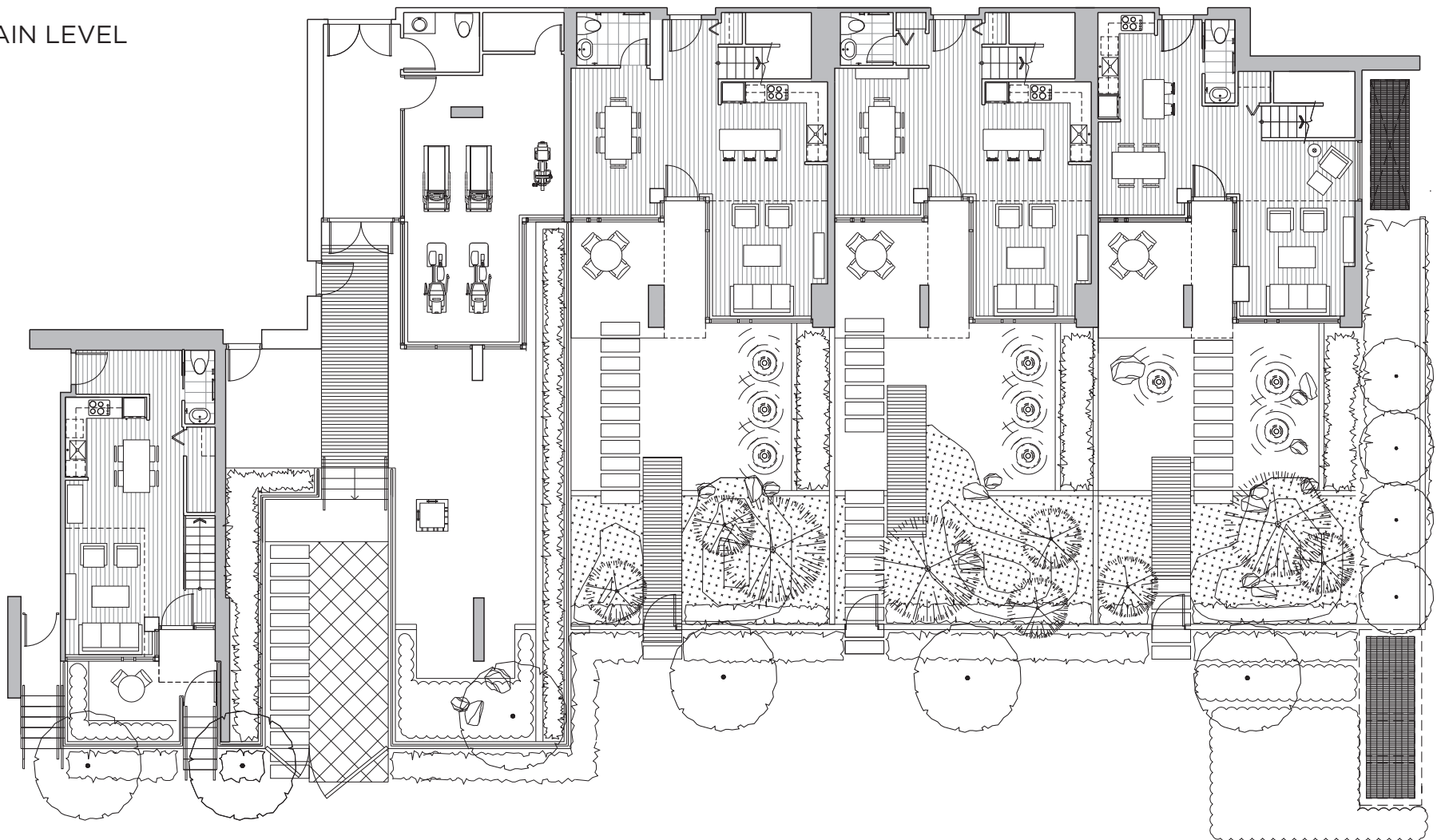
Actual City Loft plans may include columns, crossbeams and/or other minor variations from the typical plan illustrated.



### UPPER LEVEL



### MAIN LEVEL



**COSMO**

The developer reserves the right to make modifications and changes to building design, specifications, features, ceiling heights and floor plans without notification. Suite sizes are computed to the outside face of exterior walls, the outside face of walls adjacent to common areas and to the centerline of walls common to other suites. Measurements for exterior balconies and terraces are computed from the outside face of exterior walls to slab edges or the outside face of parapets. The flooring pattern shown on plan does not indicate the actual wood or laminate direction installed. The floor key may vary depending on the floor the suite is on. Room sets illustrated are the designer's and artist's suggestions of finishing and decorating style. All illustrations reflect the artist's interpretation of the project and do not take into account the neighbouring buildings, physical structures, streets and landscape. These matters will be governed entirely by the terms of the applicable Disclosure Statement and purchase contract in each case. Cosmo Project Limited Partnership. E.&O.E.