

# CONCORD PARK PLACE

## LEASING OPPORTUNITY



\*Rendering of completed development

**CONCORD**  
PARK PLACE

FOR LEASING INQUIRES  
PLEASE CONTACT:

Andrea McKittrick  
(416) 813-1030  
[Andrea.McKittrick@concordadex.com](mailto:Andrea.McKittrick@concordadex.com)





Demographics	800 m Radius (10 min walk)	2 km Radius	Household Information	800 m Radius (10 min walk)	2 km Radius
2015 Est. Population	9,851	56,820	Average Household Income	\$123,823	\$116,157
2020 Est. Population	15,661	68,400	Person Per Household	2.82	2.55
Annualized Growth Rate 2015 - 2020	9.7%	3.8%			

With major highways and the TTC subway nearby, as well as regional retailers Ikea and Canadian Tire on site this location presents a great opportunity and is an enviable retail hub.

The community demographics are evenly distributed age profiles, with 42% of the population between ages 20-49.

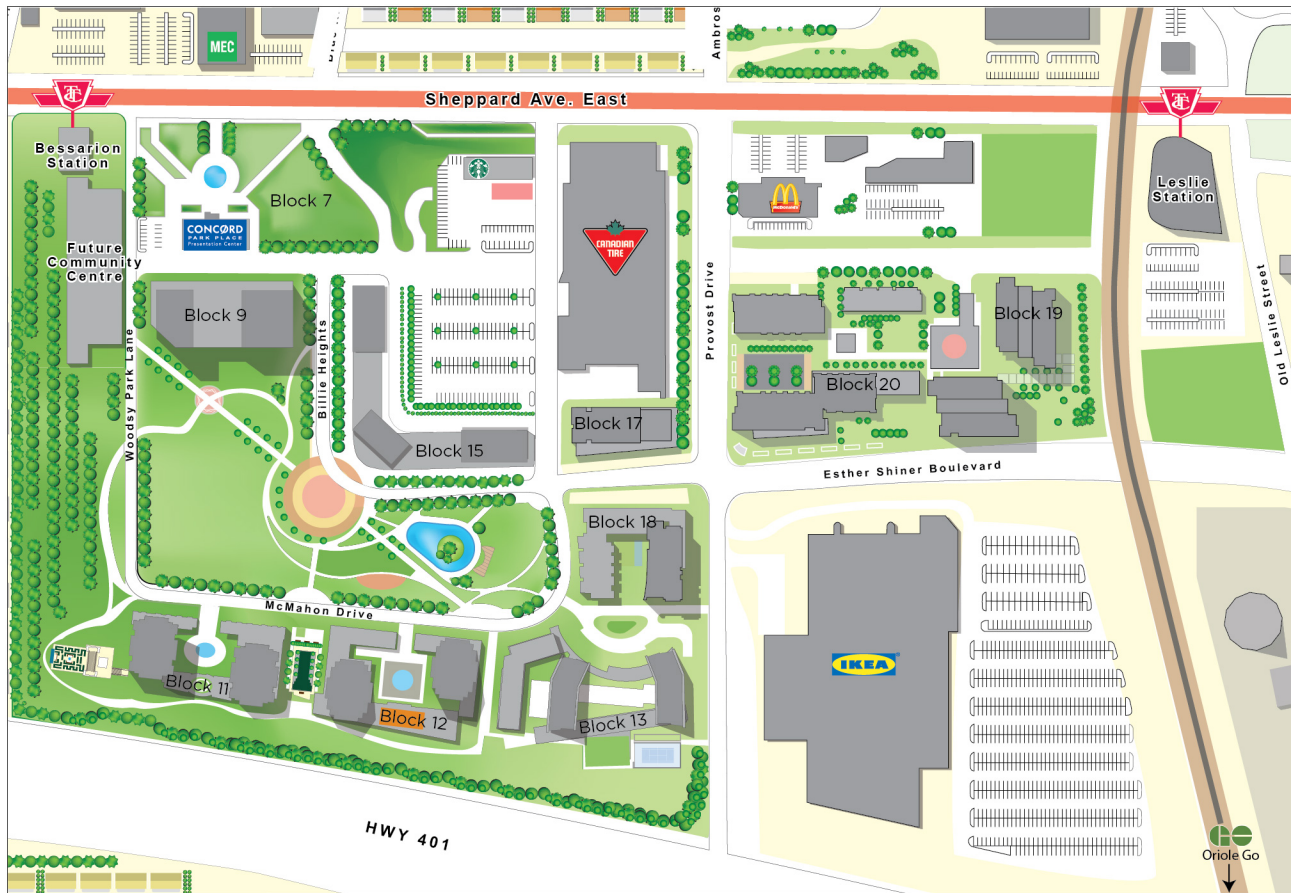
**CONCORD**  
PARK PLACE

FOR LEASING INQUIRES  
PLEASE CONTACT:

Andrea McKittrick  
(416) 813-1030  
Andrea.McKittrick@concordadex.com



# CONCORD PARK PLACE COMMUNITY MASTER PLAN



## DEVELOPMENT TIMELINE

Block #	# Of Units	# Of Retail Units	Estimated Occupancy
19/20	1,131	9	Occupied
17/18	685	9	Occupied
13	740	TBA	2018
12	723	TBA	2019
11	419	TBA	2020
15	865	TBA	2021
9	184	TBA	2021
7	270	TBA	2022

Concord Park Place is a 45 acre Master Planned highrise community in the heart of North York.

5.8 acres of park.

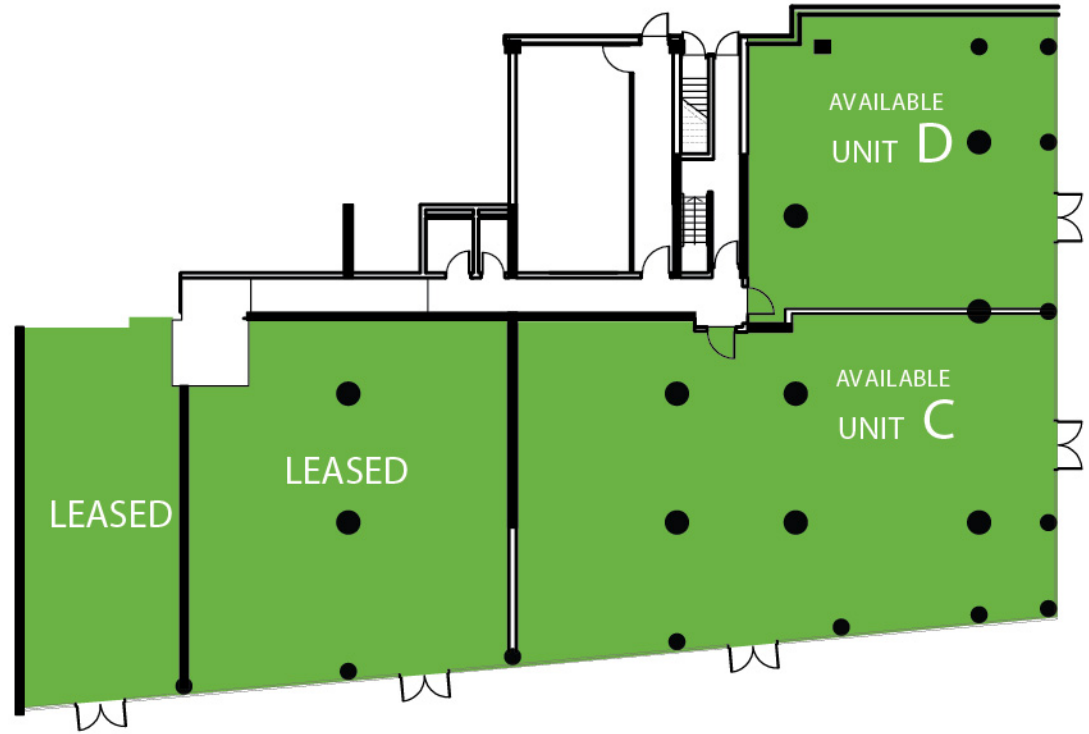
4 story community centre.

Over 200,000 sf of retail space.

**CONCORD**  
PARK PLACE

FOR LEASING INQUIRES  
PLEASE CONTACT:

Andrea McKittrick  
(416) 813-1030  
Andrea.McKittrick@concordadex.com



#### UNIT C

Occupancy: Immediate

Size: 3,487 sf

Lease Rate: Contact Leasing Agent

TMI: \$14.00 (Estimate 2018)

#### UNIT D

Occupancy: Immediate

Size: 1,681 sf

Lease Rate: Contact Leasing Agent

TMI: \$14.00 (Estimate 2018)



Areas are approximate, actual square footage may vary from state of floorplan

**CONCORD**  
PARK PLACE

FOR LEASING INQUIRES  
PLEASE CONTACT:

Andrea McKittrick  
(416) 813-1030  
Andrea.McKittrick@concordadex.com